

*Make your ship
Energetic!*





***We create the wonderful future by making
your ship energetic and uniting all the seas
and oceans around the world!***

MESSAGE

We, N.Y. Co., Ltd. founded in 1976 by Mr. YOSHIKAWA Noriyoshi who is our counselor / chairman now. He was a superintendent in shipping company and had experiences of duty on board as a chief engineer before establishing our company. He started his business handling marine equipment and spare parts with his well-experienced knowledge. His strong belief, “put ourselves in customer’s mind as an engineer” inherited to the present.

We have been able to be kept running our company due to tremendous support of our clients and vendors ever since we established. It would not succeed without our staff’s effort as well. Firm relationships between us and clients are huge network, and those are irreplaceable our assets by anything.

And I, YOSHIKAWA Shinya became a representative director in 2013. I am eager to provide best services to our customers more than ever, with my experiences of former work as plant engineer in construction and trial run at power plant. We will extend range of our business from offshore to onshore, with taking in new technology and it is our intention to accomplish.

I believe company is just like a home, which nurtures happiness to all of our staffs and their families. The happiness of our staffs and their families will certainly spread to company, customers, and finally to the society around us.

I will build more trust relationships between me and staffs, customers, and clients, to ensure long-term happiness. We also aim to make our company having more than 100 years history, and we will keep growing up to pass on to next generation.

We are always happy to meet any demands of customer as “a company which makes every ship energetic”.



PRESIDENT
YOSHIKAWA Shinya

COMPANY PROFILE

COMPANY NAME	N.Y. Co., Ltd.
ADDRESS	No.3 Toun Bldg., 1-13-10, Shibaura, Minato-ku, Tokyo 105-0023, Japan ✉ hd-office@ny-tokyo.com 🌐 https://www.ny-tokyo.com/en/
PHILIPPINES SATELLITE BRANCH	Rm 203 Casa Catalina Bldg., 635 General Malvar St. Malate, Manila, 1004, Metro Manila ☎ +63-918-9673669 ✉ honeyvg-ph@ny-tokyo.com
DATE OF ESTABLISHMENT	3rd, June, 1976
CAPITAL	¥30,000,000 (JPY)
PRESIDENT	YOSHIKAWA Shinya
COUNSELOR / CHAIRMAN	YOSHIKAWA Noriyoshi
EMPLOYEE	16 members *as of April, 2024
MAIN BANKS	Sumitomo Mitsui Banking Corporation [Mita-Dori Branch] Resona Bank, Limited. [Tamachi Branch] The Bank of Yokohama, Ltd. [Shinagawa Branch] The Shoko Chukin Bank, Ltd. [Tokyo Branch]
MEMBERSHIP	The Tokyo Chamber of Commerce and Industry Corporate Association of Shiba Japan Ship Machinery and Equipment Association
LICENCE	Tokyo Secondhand Dealer, No.301091604203 Employment Placement Businesses, No.13- コ -310777 Worker Dispatching Undertakings, No. 派 -13-314063

COMPANY HISTORY

1976	JUN.	Established by chairman YOSHIKAWA Noriyoshi as a trading company of marine equipment and spares Capital: ¥2,000,000 (JPY)
1977	SEP.	Became an authorized agent of MIURA Co., Ltd. (Z-Boiler)
1993	JUN.	Increased capital to ¥10,000,000 (JPY)
2005	JUN.	Increased capital to ¥20,000,000 (JPY)
2011	JUL.	YOSHIKAWA Shinya assumed the executive director (From Mitsubishi Heavy Industries, Ltd.)
2013	MAR.	Relocated the office for expansion (No.3 Toun Bldg., 1-13-10, Shibaura, Minato-ku, Tokyo, Japan)
2013	JUN.	YOSHIKAWA Shinya assumed the president
2014	OCT.	Established a Manila office in Philippines
2016	APR.	Released first-aid kit, "SHiP+AiD"
2018	NOV.	Increased capital to ¥30,000,000 (JPY)
2022	APR.	Released new inboard service cart, "Beecele"

OUR SERVICE LINE-UP



- 🌐 Ship's equipment, spare parts, and store arrangement
*Details as handling makers list
- 🌐 Overseas products arrangement
*Details as handling makers list
- 🌐 Authorized agent
*Details as authorized agent list
- 🌐 Boiler and incinerator maintenance
- 🌐 Service engineer and repairing arrangement
- 🌐 Loading, unloading, and waste oil arrangement
- 🌐 Consignment and deliver on board arrangement in foreign countries
- 🌐 Agency service in Philippines
- 🌐 Secondhand machineries and spares arrangement
- 🌐 Temporary staff arrangement of engineer and superintendent

🌐 First-aid kit for your ship "SHiP+AiD"

SHiP+AiD prevents you from...

- Leakage of Piping (water, sea water, air, fuel..)
- Leakage of
 - Auxiliary steam plumbing
 - High temperature exhaust gas piping
 - High pressure hydraulic piping
- Crack of Expansion joint etc...



QR code for more details on YouTube!
<https://youtu.be/t7GZi0LWGeY>



🌐 New Inboard service cart "Beecler"

- Transport lashing belt at P.C.C.
- Reusing old golf car
- Zero emission by electric motor



QR code for more details on YouTube!
<https://youtu.be/tFdxHKEZFKE>



E-COMMERCE FOR SHIP OWNER “Watatumi”

- Place to order ship parts online
- Manages from order to delivery on board
- Always confirm prices & leadtime



READ MORE

<https://www.watatumi.com/en/>



AUTHORIZED AGENT

- MIURA Co., Ltd.
 - Boiler •Incinerator •Fresh Water Generator
 - Ballast Water Management System
- Matsubara Iron Works Co., Ltd.
 - Compressor
- RWO
 - Oil Separator •Sewage Treatment Plant
 - Fresh Water Generator
- Peter Taboada
 - Reverse Osmosis Water Purification Systems
- BROLICH
 - Power Measuring System

MIURA

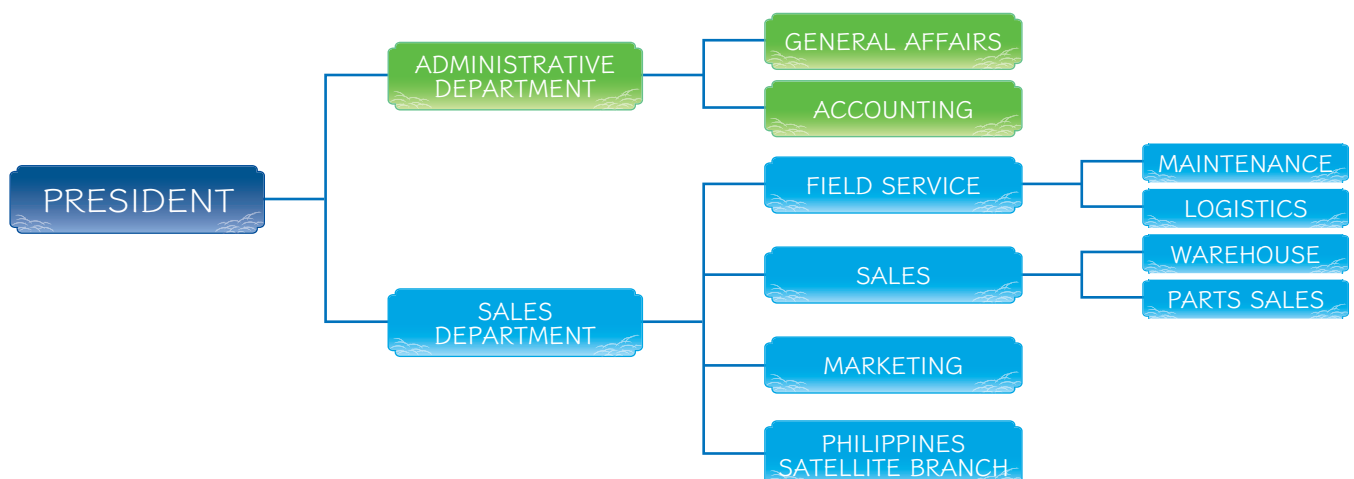
株式会社 松原鐵工所

RWO **VEOLIA**

PETER TABOADA
ADVANCED WATER TECHNOLOGY
TECNOLOGÍA AVANZADA DEL AGUA

BROLICH
MARINE ELECTRONIC ENGINEERING LTD.

ORGANIZATION CHART



HANDLING MAKERS

Color legend



► MAIN ENGINE / GENERATOR / TURBOCHARGER

AKASAKA DIESEL	HITACHI	JAPAN ENGINE CORPORATION	◎ MITSUBISHI(MHI)	TURB SYSTEMS UNITED
CATERPILLAR JAPAN LLC	◎ HANSHIN DIESEL	JFE	◎ MITSUI	◎ YANMAR
DAIHATSU DIESEL	IHI	KAWASAKI(KHI)	NIIGATA POWER SYSTEMS	
DIESEL UNITED	IMEX	◎ MAKITA		
DAEWOO	DOOSAN	HYUNDAI / HiMSEN	SAMSUNG	STX
SHANGHAI MARINE DIESEL ENGINE	DALIAN MARINE DIESEL	ANQING CSSC DIESEL ENGINE	CSSC MARINE POWER	HENAN DIESEL ENGINE
CHONGQING CUMMINS ENGINE	SHAANXI DIESEL ENGINE	L'ORANGE FUEL INJECTION		
DEUTZ MWM	MAK	MAN	MAN B&W	◎MTU
SEMT	BERGEN	WARTSILA	VOLVO PENTA	ROLLS-ROYCE
SULZER	PIELSTIC	CREPELLE	CAT	

► SHAFTING / PROPELLOR

KAMOME PROPELLER	NAKABOHEC	NIPPON CORROSION ENGINEERING	STERN KEEPER	WÄRTSILÄ IN JAPAN
KEMEL(EAGLE)	NAKASHIMA PROPELLER	NIPPON PILLAR PACKING	TRATEC	

► AUXILIARY BOILER / INCINERATOR

ALFA LAVAL	AWASAKI(KHI)	MITSUI	OSAKA BOILER	VOLCANO
IHI	◎ MIURA	MITSUBISHI(MHI)	SUNFLAME	
KANGRIM	DONGWHA ENTEC			
NANJING LVZHOU MACHINERY	HANSUN MARINE TECHNOLOGY	ZHANGJIAGANG GREENS SHAZHOU	JIANGSU NANJI MACHINERY	
SAACKE	TEAM TEC	ALFA LAVAL (AALBOLG)		

► PUMP

DAITO	ELEPON	ISHII	NIPPON OIL	◎ TAIKO
DAIICHI SEISAKUSYO	HEISHIN	KASHIWA	SANKO ENG.	TSURUMI
EBARA	HSN-KIKAI KOGYO	NANIWA	SHINKO	TEIKOKU
SHIN SHIN MACHINERY	JIANGSU ZHEN HUA PUMP	TIANJIN PUMPS & MACHINERY		
ALLWEILER	BORNEMANN	NETZSCH-MOHNO	IMO	THUNE EUREKA
SEEPEX	GRUNDFOS SPECK	KSB	KRAL	BEHRENS
LEISTRITZ	HERBORNER	RICKMEIER	HAMWORTHY	◎ 3P PRINZ

► COMPRESSOR

◎ MATSUBARA	SUCTION GAS ENGINE	TANABE	TEIKOKU	◎ YANMAR
SANWA				
HI AIR KOREA	BUMHAN COMPRESSOR			
SPERRE	◎ SAUER & SOHN	HATLAPA	SABROE	HAMWORTHY
TMC TAMROTOR	ATLAS COPCO	BAUER	BOCK	BITZER

► HEAT EXCHANGER / HRATER / REFRESH WATER

◎ ALFA LAVAL	◎ MIURA	SETOUCHI	TAISEI	YAMASHINA
HISAKA	SASAKURA	SHOWA		
ALFA LAVAL	JOWA	SONDEX	SERCK COMO	EVAC
UEBERALL	◎PETER TABOADA			

► PURIFIER / OIL SEPARATOR

AMEROID	GEA JAPN	KANAGAWA KIKI KOGYO	NIKURA	SASAKURA
◎ ALFA LAVAL	HEISHIN	◎ MITSUBISHI KAKOKI	◎ SELECT	◎ TAIKO
BALLFILTER JAPAN				
SAMGONG	SSANGYONG	YOOWON		
HANSUN MARINE TECHNOLOGY	NANTONG NAVIGATION MACHINERY			
ALFA LAVAL	DVZ	B+V TURBULO	◎ RWO	MAHLE NFV
WESTFALIA	OCEAN CLEAN	BALL & KIRCH	MOATTI	MANN+HUMMEL

► DECK MACHINERY

FUKUSHIMA	KAWASAKI(KHI)	MANSEI	NIPPON PUSNES	UCHIDA
IHI	MAROL	MITSUBISHI(MHI)	SEKIGAHARA	
YOOWON	DONGNAM ENTERPRISE			
WUHAN MARINE MACHINERY	ZHENJIANG MARINE AUX.MACH.	SOUTH CHINA MARINE MACHINERY		
► HATCH COVER / ACCOMODATION LADDER / PILOT LADDER				
KYORITSU	MACGREGOR JAPAN	NAKATA MAC	NAKANO	YASHIO
JUNG-A MARINE	SAMGONG			
TTS HUA HAI SHIPS EQUIPMENT				

▶ **ELECTRIC ANTICORROSION / ANODE / MARINE GROWTH PREVENTION**

CHUO-KOSAN KC	mitsubishi materials	NAKABHOTEC	NIPPON CORROSION	TRATEC
------------------	----------------------	------------	------------------	--------

▶ **LIFE BOAT / LIFE SAVING RAFT**

NISHIEFU	SHIGI	TSUNEISHI FACILITIES&CLAF		
----------	-------	---------------------------	--	--

ZHENJIANG MARINE

▶ **REFRIGERATOR / AIR CONDITIONER**

DAIKIN JOHNSON CONTROLS	MAEKAWA MITUI ZOSEN MACHINERY	mitsubishi NISSHIN REFRIGERATION	TOYO ENGINEERING TAKAGI REFRIGERATING	USHIO REINETSU
----------------------------	----------------------------------	-------------------------------------	--	----------------

HI AIR KOREA

▶ **KITCHEN EQUIPMENTS / ACCOMMODATION**

USHIO REINETSU HOSHIZAKI ELEC.	SAKAE SENPAKU DENKI mitsubishi CHUKI	SANWA CHURI WASHIO CHURI	NIPPON CONTROLS	
-----------------------------------	---	-----------------------------	-----------------	--

▶ **CONROL EQUIPMENT & ELECTRIC**

© AZBIL EIWA FUJI ELEC. HITACHI	mitsubishi ELEC NIHON SEIKI KOGYO NIPPON HAKUYO KEIKI NISHISHIBA ELEC.	NUNOTANI HAKUYO KEIKI OMRON SAGINOMIYA SANSHIN ELEC.	SINFONIA TECH. TAIYO ELEC. TOKYO KEIKI UZUSHIO ELEC.	YASUKAWA ELEC. YOKOKAWA ELEC.
--	---	---	---	----------------------------------

PAN-ASIA	HANSHIN ELEC	SAMGONG		
----------	--------------	---------	--	--

VARIO TRAFAG	ABB	AEG	EATON	SIEMENS
-----------------	-----	-----	-------	---------

▶ **COMMUNICATION & NAVIGATION EQUIPMENT**

DAIKO KEIKI EIWA	FURUNO ELEC IBUKI KOGYO	JAPAN RADIO KURAMOTO INSTRUMENT	NUNOTANI HAKUYO KEIKI TOKYO KEIKI	YOKOKAWA DENSHIKIKI
---------------------	----------------------------	------------------------------------	--------------------------------------	---------------------

SARACOM	MARINE RADIO	SAMGONG		
---------	--------------	---------	--	--

▶ **MEASURING INSTRUMENT**

DANFOSS EIWA NAGANO KEIKI	KOBATA GAUGE MEIYO ELEC. NITTO SIEKO	NAKAKITA SEISAKUSYO RIKEI KEIKI SAGINOMIYA	SANKYO SEMCO SIEMENS	TOKIKO TECH. TOKYO KEIKI
---------------------------------	--	--	----------------------------	-----------------------------

PAN-ASIA	HANLA LEVEL			
----------	-------------	--	--	--

JIANGSU YUANWANG INSTRUMENT

NORIS VALCOM SAUTER	AUTRONICA VEGA © BROLICH	ENDRESS+HAUSER SIKA	SIEMENS LEUTERT	ENRAF DANFOSS
---------------------------	--------------------------------	------------------------	--------------------	------------------

▶ **DISASTER PREVENTION & LIFE PRESERVER**

AIR WATER DRAEGER SAFETY JAPAN	KOA KAKO NITTAN	NOHMI BOSAI	OKI DENKI BHOSAI	YAMATO PROTEC
-----------------------------------	--------------------	-------------	------------------	---------------

NK FIRE PROTECTION

KIDDE DIANIMANT	APPOLO	SALWICO	DRAEGER	TYCO
--------------------	--------	---------	---------	------

▶ **CHEMICAL / ADDITIVE**

KURITA © LUBRICON	© MIURA	NIPPON YUKA KOGYO	UNITOR	ICHINEN CHEMICALS
----------------------	---------	-------------------	--------	-------------------

▶ **OTHERS**

© TOMOE VALVE ANCHOR/CHAIN	© OKM WIRE/ROPE	HAGIWARA VALVE BERT/ROLLER(BELT CONVEYOR)	MIYAIRI VALVE MFG ALL SORTS OF PAINT	YUKEN KOGYO SET OF ARTICLES FOR SHIPS
-------------------------------	--------------------	--	---	--

HALLA AUTOMATIC VALVE

※Above are only part of our handling makers, please contact us for not-listed makers.



株式会社

N.Y. CO., LTD. SINCE 1976

エネジー

~ Make your ship Energetic! ~

With our dreams & hopes,
We keep moving forward!

